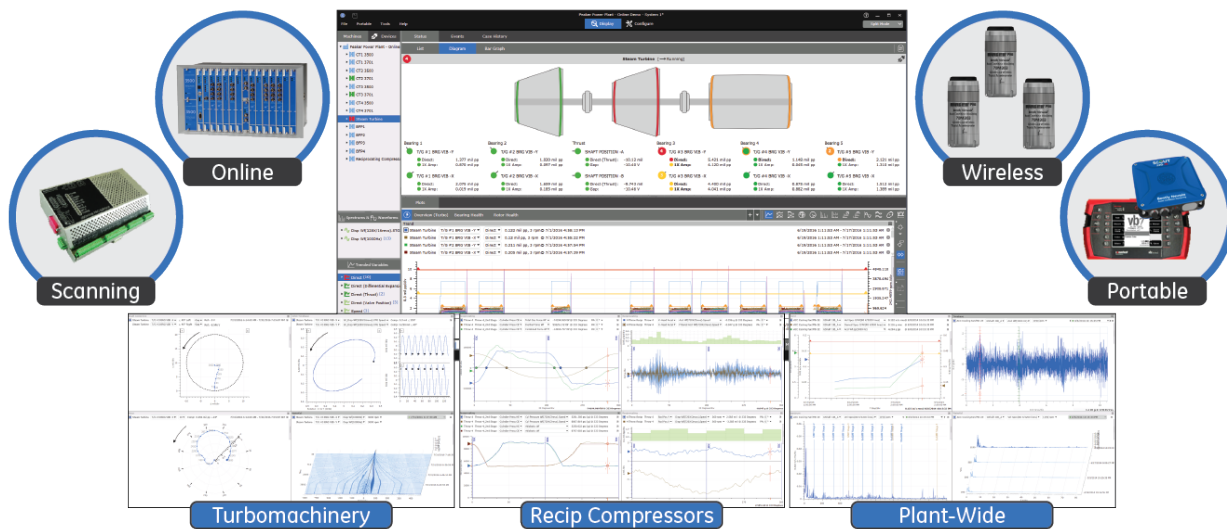
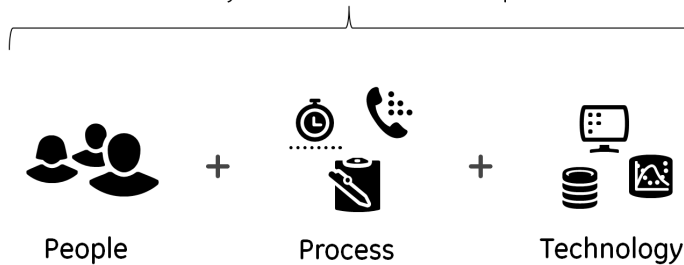


System 1 represents the Bently Nevada flagship condition monitoring solution, which seamlessly integrates with our industry leading products including online and portable devices. System 1 provides scalability by adapting to the condition monitoring requirements at your facility, as well as flexibility by connecting to any Bently Nevada field devices. Our products are designed for diverse applications and equipment failure modes at industrial facilities. We offer flexible packages ranging from portable to comprehensive plant-wide condition monitoring. We recommend understanding your equipment and defining your operation and maintenance goals first. Then, choose the software package and field devices that help you achieve those goals.



Keys to a Successful CM Program Bently Nevada Solution Scope



A successful condition monitoring program requires equipment knowledge including an understanding of failure modes and operational criticality, together with a cross functional team, process rigor, and enabling technologies. Bently Nevada offers flexible solutions ranging from product delivery and deployment services to supporting service agreements through which we partner with you to manage your condition monitoring program.

Package Ordering (Perpetual License)

Package	Online Continuous CM	Scanning & Process CM	Portable CM
Premium+	✓	✓	✓
Premium	✓	✓	
Advanced+		✓	✓
Advanced		✓	
Fundamental			✓

Industrial/Power Gen Packages Include:

- Premium+ licenses (equals 3071/10-02)
- Unrestricted device import (equals 3071/11-AA-BB-CC-DD, 3071/12-AA, 3071/13-AA-BB-CC, 3071/60-AA)
- Unrestricted process data import (OPC DA - equals 3071/14-AA)
- Unrestricted process data export (OPC DA - equals 3071/15-AA)
- Unlimited Display Clients

Industrial/Power Gen Packages Do Not Include:

- Database Replication
- Performance Monitoring

General Industrial Perpetual Package

3071/70 System 1 for Industrials - Perpetual

3071/70-AA-BB-CC

AA: Industry Type

01	Pulp and Paper
02	Air Separation
03	Sugar Production
04	Wastewater
05	Drilling Rigs
06	Steel Production
07	Food & Beverage
08	Manufacturing
09	Pharmaceuticals
10	Marine Vessel *

*Navy, Container Ship, LNG Transport, FSRU, etc.

NOT applicable for FPSO, FSO, or FLNG vessels

BB: Package Size

01	Small Database
02	Medium Database
03	Large Database
04	Extra Large Database

CC: Quantity of Server Licenses

##	Numeric Entry [1 →25]
----	-----------------------

Power Generation Perpetual Package

3071/80 System 1 for Power Generation - Perpetual

3071/80-AA-BB-CC

AA: Package Option

01	New Order
02	Expansion Order

BB: Plant Output (MW)

##	Numeric Entry [1 →30,000 MW]
----	------------------------------

CC: Quantity of Server Licenses

##	Numeric Entry [1 →25]
----	-----------------------

Database Replication

3071/16 System 1 Replication

3071/16-AA-BB-CC

AA: Tx Server(s) (License Value of Tx Server)

##	Numeric Entry [1→n]
	Conduit to move data to the business network
	Contains config info and connection to devices

BB: Rx Server(s)

##	Numeric Entry [1 →n]
	Database mirroring S1 server on Plant Network
	Supports 80-90% of condition monitoring tasks

CC: Physical Installation Media

01	No (Default)
02	Yes

Performance Monitoring

3071/17 System 1 Performance

3071/17-AA-BB-CC

AA: Simple Machines

##	Quantity Entry [1→n]
	Pump, Compressor, Steam Turbine, Fan, Expander, Generator, Heat Exchanger

BB: Complex Machines

##	Quantity Entry [1 →n]
	Expander Recompressor, Gas Turbine, Side Stream Compressor
	Counts per stage/casing

CC: S1 Servers with Performance

##	Quantity Entry [1 →n]
----	-----------------------



Refer to System 1 Software Package Datasheet, document number 108M5214, for additional information, including specifications, product capabilities, server options, and language packs.

Package Ordering (Subscription License)

We offer subscription licenses that include support for and updates to System 1. Software functionality is identical for perpetual and subscription licenses. Key structural differences exist between these license types:

Subscription License

- Smaller upfront investment (flat year-over-year OPEX)
- Subscription license fee includes support and updates.
- Software stops working if subscription is cancelled.

Perpetual License

- Larger upfront investment (one-time CAPEX)
- Must purchase support and updates (M&S) separately (lower OPEX than subscription)
- Software license does not expire. Support and updates cease if M&S is cancelled

General Industrial Subscription Package

3072/70 System 1 for Industrials

3072/70-AA-BB-CC-DD-EE

AA: Purchase Type

01	New (First time purchase)
02	Renewal

BB: Term (Subscription Term in Years)

##	Numeric Entry [3→5]
----	---------------------

CC: Industry Type

01	Pulp and Paper
02	Air Separation
03	Sugar Production
04	Wastewater

05	Drilling Rigs
06	Steel Production
07	Food & Beverage
08	Manufacturing
09	Pharmaceuticals
10	Marine Vessel *

*Navy, Container Ship, LNG Transport, FSRU, etc.
 NOT applicable for FPSO, FSO, or FLNG vessels

DD: Package Size

01	Small Database
02	Medium Database
03	Large Database
04	Extra Large Database

EE: Quantity of Server Licenses

##	Numeric Entry [1 →25]
----	-----------------------

Power Generation Subscription Package

3072/80 System 1 for Power Generation

3072/80-AA-BB-CC-DD-EE

AA: Purchase Type

01	New (First time purchase)
02	Renewal

BB: Term (Subscription term in years)

##	Numeric Entry [3→5]
----	---------------------

CC: Package Option

01	New Order
02	Expansion Order

DD: Plant Output (MW)

##	Numeric Entry [1→30,000 MW]
----	-----------------------------

EE: Quantity of Server Licenses

##	Numeric Entry [1→25]
----	----------------------

System 1 Wind Subscription Package

3072/84 System 1 for Power Generation

3072/84-AA-BB-CC-DD

AA: Purchase Type

01	New (First time purchase)
02	Renewal

BB: Term (Subscription term in years)

##	Numeric Entry [1→20]
----	----------------------

CC: MW Output of Wind Farm

##	Numeric Entry [1→10,000 MW]
----	-----------------------------

DD: Quantity of Server Licenses

##	Numeric Entry [1→25]
----	----------------------

Database Replication

3072/16 System 1 Replication

3072/16-AA-BB-CC

AA: Tx Server(s) (License Value of Tx Server)

##	Numeric Entry [1→n]
----	---------------------

BB: Rx Server(s)

##	Numeric Entry [1 →n]
----	----------------------

CC: Physical Installation Media

01	No (Default)
02	Yes

Performance Monitoring

3072/17 System 1 Performance

3072/17-AA-BB-CC

AA: Simplex Machines

##	Quantity Entry [1→n]
	Pump, Compressor, Steam Turbine, Fan, Expander, Generator, Heat Exchanger

BB: Complex Machines

##	Quantity Entry [1 →n]
	Expander Recompressor, Gas Turbine, Side Stream Compressor
	Counts per stage/casing

CC: S1 Servers with Performance

##	Quantity Entry [1 →n]
----	-----------------------



Refer to System 1 Software Package Datasheet, document number 108M5214, for additional information, including specifications, product capabilities, server options, and language packs.

Get Connected

Included with the Industrial/Power Generation Packages

3500 Device Series

3500 Full Rack



/22, /25, /32, /33, /40, /42, /44, /45, /50, /60, /61, /64, /65 - Standard & M series monitors

- 14 monitor slots with simultaneous sampling
- 1 sec trend / 10 min waveform data capture
- High resolution alarm data capture
- High resolution startup/shutdown data capture

3500 Mini Rack



Same monitors as Full Rack

- 7 monitor slots
- Same capabilities as Full Rack

TDI Secure Devices [/42E /45E /PV]



Recommended for monitoring machines that cannot be natively connected to System 1 via standard devices (3rd party HW, Cyber, etc.)

- 24Vib + 24 Process points + 4 Tachs

ADAPT 3701 /40 /44 /46



- 12 simultaneous monitoring points + 2 Tachs
- 1 sec trend / 10 min waveform data capture
- High res alarm and SUSD data capture

System 1 Classic Connector



Connect to legacy Bentley Nevada Devices, including Trendmaster, TDXNet, 1701 FMIM

Condition Monitoring and Basic Protection

vbOnline Pro Monitoring Device



- 12 simultaneous monitoring points + 2 tachs
- 30 sec trend / 10 min waveform data capture
- Simultaneous Alarm Snapshot (1 per 30 sec)

2300 Monitoring Device



- 2 simultaneous monitoring points + 1 tach
- 1 sec trend / 10 min waveform data capture

Ranger Pro Device



- Single axis: 1 accel point + 1 temperature
- Triaxial: 3 accel points + 1 temperature point
- 10 min trend / 6 hour waveform data capture

Process Data

OPC DA Server Import



- Includes up to 6000 tags for a S1 Server
- 1 sec trend data capture

OPC DA Server Export



- Includes up to 10000 tags for a S1 Server
- 1 sec data export rate

Portables



- Analyzers and data collectors with hazardous area approvals
- 2 and 4 Channel Models



Refer to System 1 Software Package Datasheet, document number 108M5214, for additional information, including specifications, product capabilities, server options, and language packs.

Copyright 2019 Baker Hughes, a GE company, LLC ("BHGE") All rights reserved.

Bently Nevada, System 1 and Orbit Logo are registered trademarks of BHGE in the United States and other countries. All product and company names are trademarks of their respective holders. Use of the trademarks does not imply any affiliation with or endorsement by the respective holders.

The information contained in this document is subject to change without prior notice.

1631 Bently Parkway South, Minden, Nevada USA 89423

Phone: 1.775.782.3611 Bently.com

